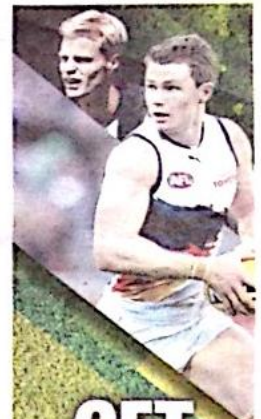




# Connecting Our Community NewsMail



## GET READY TIPSTERS

THE AFL SEASON IS ABOUT TO START, GET YOUR TIPPING CHART INSIDE TODAY



## THE DAY I PLANNED TO STRANGLE MY WIFE

A chilling account from a reformed perpetrator of domestic violence



### Exhibition explores complexity of grieving

STORY: P11

LAMENTATION: A new exhibition by Brisbane based multi-disciplinary artist Karike Ashworth has opened in The Vault at BRAG.

PHOTO: MAX FLEET  
BUN270315ART3

# THINK TWICE this Easter holiday period

**CAMPAIGN:** Emergency services are joining forces to issue a warning to motorists **STORY: P5**



## Hello Summer

HOT OFFERS INSTORE NOW

The **OPTICAL** SUPERSTORE

Ph 07 4152 2506  
Shop 2 Royal Arcade  
149 Bourong Street Bundaberg

Like us on Facebook  
The Optical Superstore Bundaberg



# On the sheets Personal loss prompts exhibition and chance to discuss grief Karike explores life in death

Jim Alouat  
ARTS AND ENTERTAINMENT  
REPORTER

A NEW exhibition at the Bundaberg Regional Art Gallery (BRAG) explores death and the unique complexity of grieving.

Death is an awkward topic to broach in real life, perhaps because it forces people to confront their mortality.

However, Brisbane-based multi-disciplinary artist Karike Ashworth has used her latest work *Lamentation* to better understand how the death of her mother in 2012 affected her and also as a catalyst to begin a discussion on the subject.

"My mother died from ovarian cancer and it was a traumatic experience," she said.

"In our society there seems to be a time limit on how long you can talk about death of a loved one.

"People kind of expect you to get over it."

The South African-born artist said during the slow process of her mother dying, she observed the hospital system and its clinical treatment of dead bodies.

"When you're in the hospital it is all about the linen," she said.

"The linen is a strong part of processing the patient in the system."

Ms Ashworth said the linen sheets became a metaphor for the bodies.

"When a sheet becomes too stained or worn it becomes classified as condemned," she said.

"I just saw that as parallel for the treatment of a dead body."

Inspired, Ms Ashworth brought together 12 women, daughters whose mothers had died, and asked them to share their experiences on a sheet of linen used as a canvas.

"The materiality of the works and the stories of the women captured in the works, really helps people to connect to their own personal experiences and stories with death and dying," Ms Ashworth said.

*Lamentation* will open at BRAG today with an artist talk with Ms Ashworth at 10.30am.

This will be followed by a Sewing Circle Workshop with Ms Ashworth starting at 12.30pm to 4pm.

This exhibition will be on show until the May 24

➤ MORE EVENTS: 10 Things to do This Weekend, Page 14



THE VAULT: *Lamentation* is an exhibition by Brisbane-based multi-disciplinary artist Karike Ashworth on display in The Vault at Bundaberg Regional Art Gallery.

PHOTO: MAX FLEET BUN270315ART1

## your place for Easter fun!

Join us for some family fun and activities  
at Sugarland Shoppingtown

Monday - Saturday March 23 - Saturday 4th April  
11am to 2pm daily

Keep the kids entertained these school holidays with our special Easter Bunny appearance at Sugarland Shoppingtown.

The Easter Bunny and Milly will be roaming the Centre handing out free Easter Eggs for all the children!

Closest on Good Friday



 **Stockland**  
*it's your place*

SUGARLAND SHOPPINGTOWN